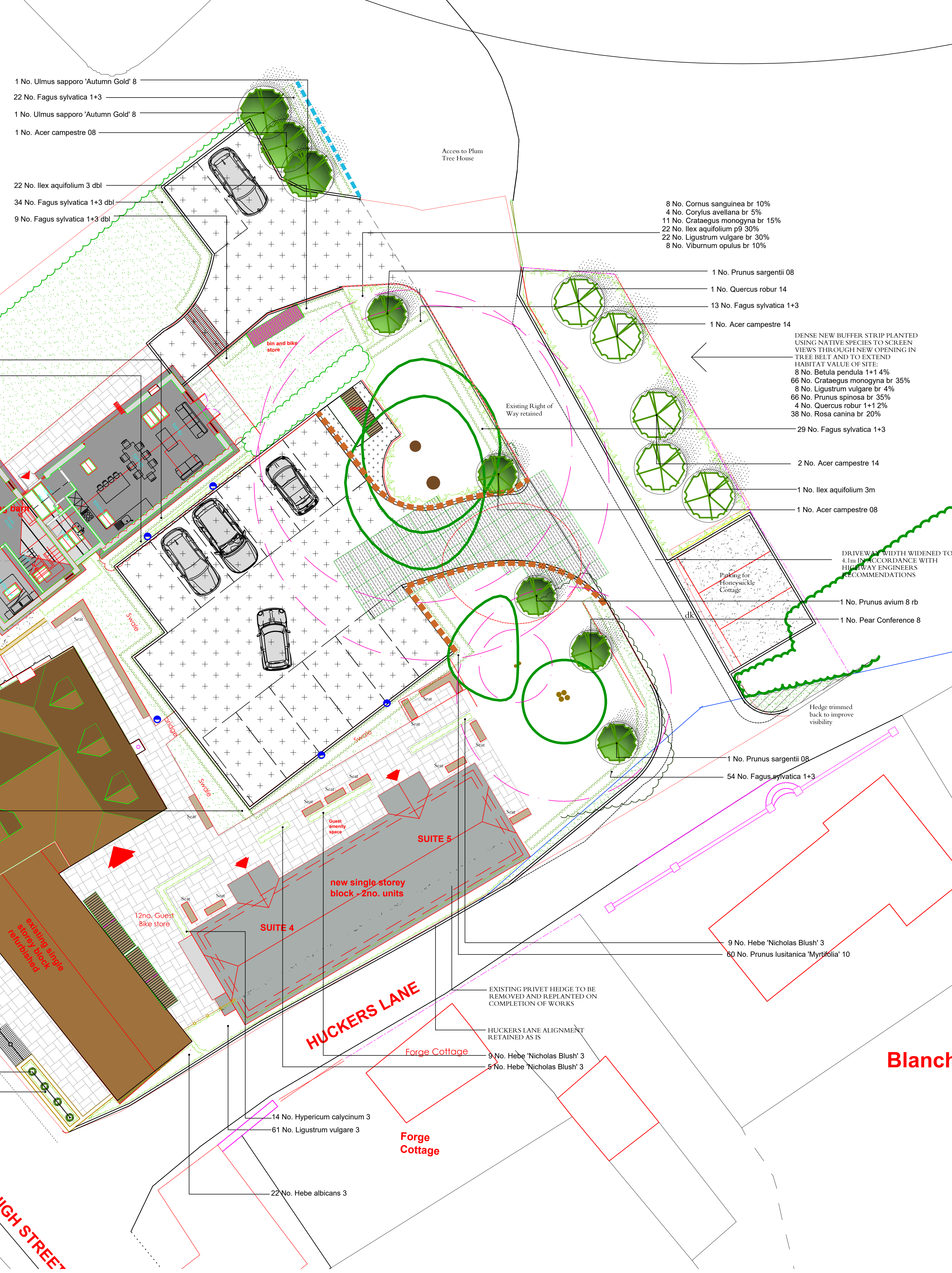
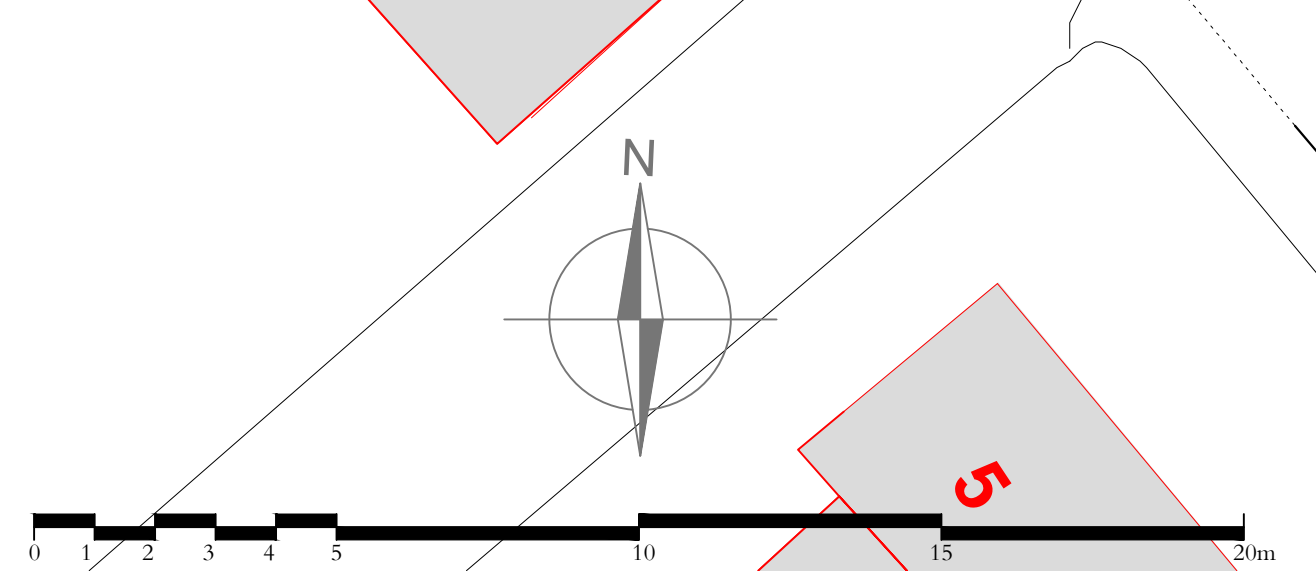


PLANT SCHEDULE				
Trees				
Number	Abbreviation	Species	Specification	Density
2	AC08	Acer campestre 08	STD 8-10cmBR	Counted
3	AM14	Acer campestre 14	EHS 14-16 RB	Counted
8	BP1+1	Betula pendula 1+1	1+1 40-60 BR	2/m ²
1	Ilex aq3m	Ilex aquifolium 3m	80L CG 3m high clear stem	Counted
1	PearCon8	Pear Conference 8	CG 8-10 STD	Counted
1	Pruav8rb	Prunus avium 8 rb	STD 8-10cm rb clear stem	Counted
2	PS08	Prunus sargentii 08	STD 8-10cmRB	Counted
4	QR1+1	Quercus robur 1+1	1+1 25-50 BR	2/m ²
1	QR14	Quercus robur 14	EHS 14-16cmRB	Counted
8	TiliorPLE	Tilia cordata 1.2 PLE	Pleached 1.8m clear stem 1.2 x 1.2m canopy CG	Counted
2	UlmsAG8	Ulmus sapporo 'Autumn Gold' 8	STD 8-10 br clear stem	Counted

Shrubs				
Number	Abbreviation	Species	Specification	Density
7	BuxS30ball	Buxus sempervirens 30cm ball	30cm dia ball on 40cm clear stem	Counted
8	COS-br	Cornus sanguinea br	1+1 40-60 BR	1/m ²
4	Coa br	Corylus avellana br	br 1+1 25-50 cm	1/m ²
11	CRM-br	Crataegus monogyna br	1+1 25-50 BR	1/m ²
86	CRM-br	Crataegus monogyna br	1+1 25-50 BR	2/m ²
6	DAPAM10	Daphne odora 'Aureo-marginata' 10	10l eq. bushy growth min 350 high	3/m ²
118	Fagsy1+3	Fagus sylvatica 1+3	1+3 spaced stock 1.2-1.5m high bushy	3/m ²
110	Fagsy1+3dbl	Fagus sylvatica 1+3 dbl	1+3 double spaced stock 1.2-1.5m high double row	4/m ²
23	HeNB3	Hebe 'Nicholas Blush' 3	30-40cm 3L CG bushy	4/m ²
22	HEA3	Hebe albicans 3	25-30 3L	4/m ²
14	Hypcaly3	Hypericum calycinum 3	3L CG bushy 20-30cm high	4/m ²
6	HYM3	Hypericum x moserianum 3	30-40 3L	4/m ²
22	Ilexa3 dbl	Ilex aquifolium 3 dbl	3L CG 40-50cm thd	4/m ²
22	ILG-p9	Ilex aquifolium p9	30-40 P9	1/m ²
25	Lam10	Lavandula munstead 10	10L CG bushy	4/m ²
61	LigV3	Ligustrum vulgare 3	3L CG 40-60cm high bushy furnished to ground	3/m ²
22	LIV-br	Ligustrum vulgare br	30-40 1+1 BR	1/m ²
8	LIV-br	Ligustrum vulgare br	30-40 1+1 BR	2/m ²
6	PitToTH 10	Pittosporum 'Tom Thumb' 10	10L CG 40-50cm high bushy	3/m ²
146	PRMY10	Prunus lusitanica 'Myrtifolia' 10	100-120cm	3/m ²
30	PRMY10	Prunus lusitanica 'Myrtifolia' 10	100-120cm	3/m ²
86	PRS-br	Prunus spinosa br	1+1 30-40 BR	2/m ²
38	RON-br	Rosa canina br	1+1 30-40 BR	2/m ²
8	VIO-br	Viburnum opulus br	1+1 30-40 BR	1/m ²

Herbaceous				
Number	Abbreviation	Species	Specification	Density
6	BERG10	Bergenia cordifolia 10	10L min 20 breaks	4/m ²
6	DRY5	Dryopteris filix-mas 5	10L	4/m ²
16	GEB3	Geranium 'Johnson's Blue' 3	10L	4/m ²

- 16 No. Geranium 'Johnson's Blue' 3
- 67 No. Fagus sylvatica 1+3 dbl
- 20 No. Prunus lusitanica 'Myrtifolia' 10
- 6 No. Hypericum x moserianum 3
- 6 No. Tilia cordata 1.2 PLE
- 6 No. Dryopteris filix-mas 5
- 1 No. Tilia cordata 1.2 PLE
- 6 No. Pittosporum 'Tom Thumb' 10
- 1 No. Tilia cordata 1.2 PLE
- 6 No. Bergenia cordifolia 10
- 6 No. Daphne odora 'Aureo-marginata' 10
- 3 No. Tilia cordata 1.2 PLE
- 10 No. Prunus lusitanica 'Myrtifolia' 10
- 19 No. Prunus lusitanica 'Myrtifolia' 10
- 3 No. Buxus sempervirens 30cm ball
- 11 No. Lavandula munstead 10
- 4 No. Buxus sempervirens 30cm ball
- 14 No. Lavandula munstead 10
- 14 No. Hypericum calycinum 3
- 61 No. Ligustrum vulgare 3
- 22 No. Hebe albicans 3



LEGEND

EXISTING FEATURES

- TREE TO BE RETAINED (Refer to Arboricultural Report for details of protection and tree works)
- EXISTING EDGING RETAINED AS IS
- SPOT HEIGHT
- STONE WALL

RECENTLY CARRIED OUT TREE PLANTING

PROPOSED FEATURES

- DECIDUOUS TREE
- PLEACHED TREE
- ORNAMENTAL SHRUBS
- ACCENT/SPECIMEN PLANT
- HEDGE
- GRASS
- 600mm HIGH METAL BOLLARDS WITH CHAIN BETWEEN (painted black)
- 1.8m HIGH TIMBER CLOSE BOARD FENCE
- 600mm HIGH BRICK WALL (materials to match building)
- 180mm HIGH BRICK WALL (materials to match building)
- STONE SLAB PAVING
- STONE COBBLES (100 x 200mm, light grey colour)
- CONCRETE BLOCK PAVING (Brett Paving Alpha Trio, silver haze colour, tumbled, laid random courses, stretcher bond)
- GRAVEL (buff colour chippings laid in plastic porous stabilising grid by Bopave or similar)
- GRAVEL (6-10mm, buff colour chippings 30mm deep on 100mm Type 1 sub-base on terram 1000 membrane, with timber edge)
- GREEN GRID SYSTEM
- CONCRETE KERB (Brett Paving Meltone 125mm textured kerb)
- TIMBER SLEEPER KERB (or similar, laid to no-dig specification)
- TIMBER SLEEPER KERB (or similar, laid to no-dig specification)
- DROP KERB
- LOW ENERGY LIGHT BOLLARD
- TIMBER POST & RAIL FENCE

- NOTES:**
- All planting & landscape operations to comply with Landscape Specification, BS4482(1989) 'Recommendations for General Landscape Operations' and BS3936 (Pt 1) (1992) 'Specification for Nursery Stock Types and Shrubs'. All container sizes shown are minimum acceptable - all plants to be supplied to sizes indicated.
 - All ornamental shrubs to be planted at regular spacings in rows set diagonally to the edge of the bed.
 - All ornamental shrub beds and hedges to be provided with coarse grade bark mulch minimum 75mm deep. Hedges to be provided with 900mm high timber post & 2-strand wire fence, unless otherwise shown.
 - PLANTS NOT SUPPLIED TO THE HEIGHTS INDICATED WILL BE REJECTED - CONTAINER SIZES ARE A GUIDE ONLY AND SHOULD NOT BE USED AS THE BASIS FOR ORDERING STOCK FROM SUPPLIERS. THE CONTRACTOR IS TO ENSURE THAT ALL PLANTS ARE TO THE HEIGHTS SPECIFIED.
 - Drawing based on Architects Site Layout Plan P18 014 02 02 010C
 - Topsoil to be 450mm deep in all shrub areas, 100mm deep in all grass areas. Tree pits to be 750 x 750 x 500mm filled with topsoil.
 - All grass areas to be turfed using Premium quality lawn turf.
 - Parking bays to be defined with concrete block soldier course.
 - PROGRAMME SCHEME TO BE IMPLEMENTED PRIOR TO THE OCCUPATION OF THE BUILDING.
 - Refer to construction drawings prepared by others, or consult with Contract Administrator, for details of paving layouts, alignments etc.
 - Refer to tree survey for details of existing trees on site. Retained trees to be subject to Arboricultural work, if required, which may include removal of hanging limbs etc. Branches of trees & shrubs may also be pruned to allow construction to proceed and to allow sightlines and safe use of footways/roadways. All existing trees to be inspected regularly by a qualified Arboriculturalist for Health & Safety purposes.

Rev	Date	By	Notes
L	25 May 24 JP		Minor changes
K	26 May 24 JP		Minor changes
J	25 May 24 JP		Minor changes
H	24 May 24 JP		Amended to reflect changes to retained trees and new planting on site
G	17 Dec 21 JP		Minor revisions
F	17 Dec 21 JP		Minor revisions
E	26 Aug 21 JP		Minor revisions
D	25 Aug 21 JP		Revised to latest layout
C	23 Jul 21 JP		Surfacing changes
B	2 Jul 21 JP		Revised to latest layout
A	8 Mar 21 JP		Highway layout updated

© This drawing is the copyright of Partridge Associates. All dimensions to be checked not scaled. No liability is accepted for any expense, loss or damage of whatsoever nature and however arising from any variation made to this drawing or in the execution of the work to which it relates which has not been referred to them and their approval obtained.

Client
DEREK WARWICK DEVELOPMENTS LTD.

Project
LAND TO REAR OF THE QUEENS HOTEL SELBOURNE

Drawing Title
LANDSCAPE PROPOSALS

Drawing Status
Planning

Scale
1/125 @ A1

Date
30 Jan 21

Drawn By
JP

Drawing No.
2247/3L