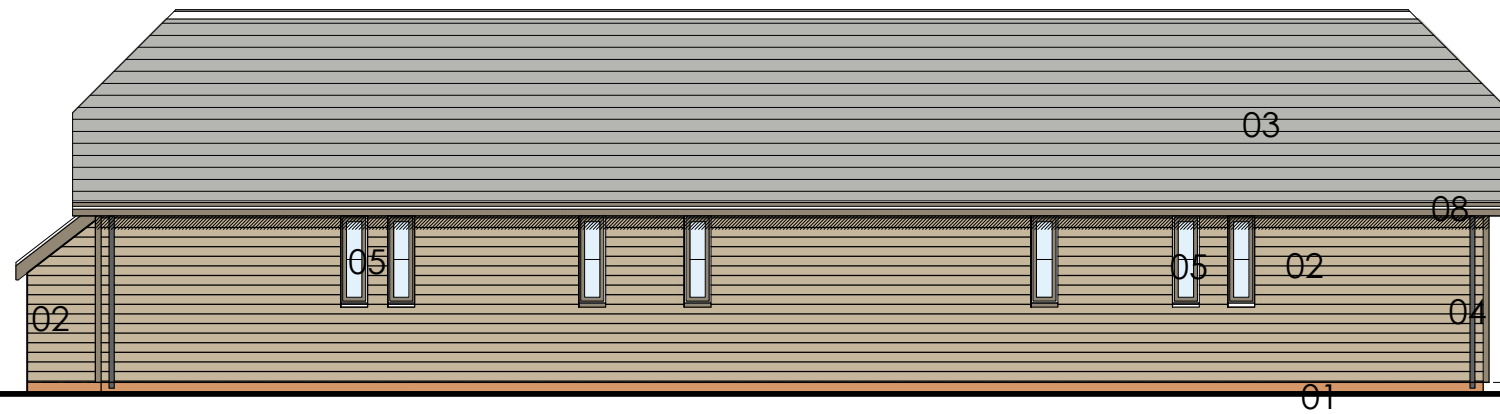
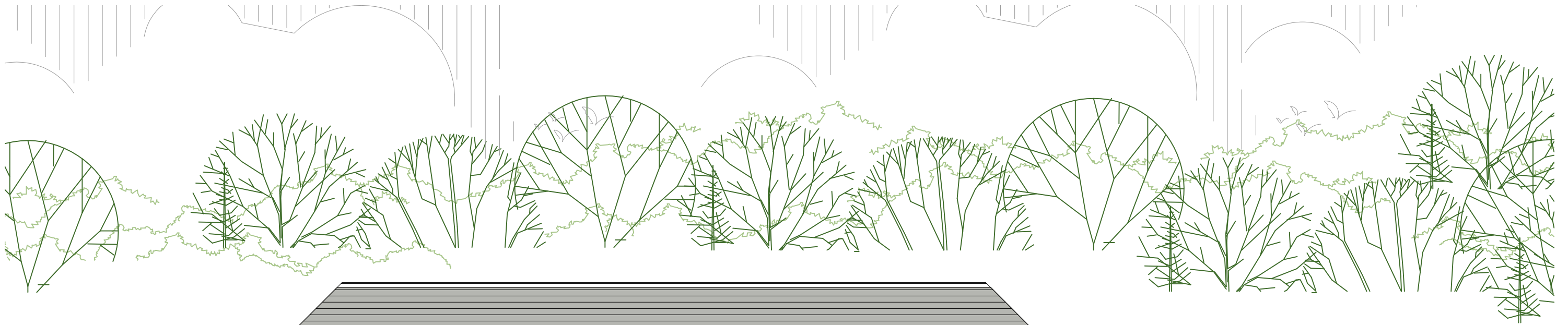
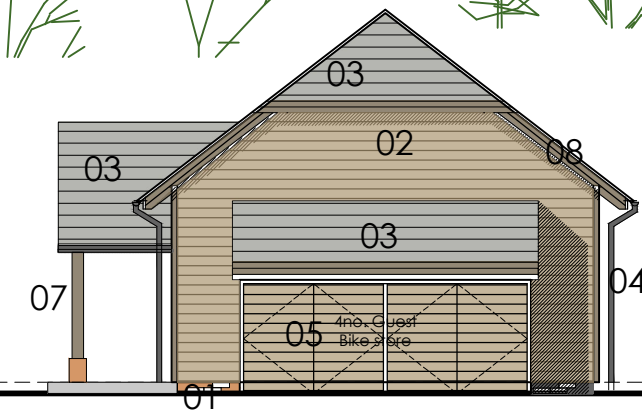


# The Queens at Selborne

This drawing is copyright and is not to be reproduced. The contractor will be held responsible for the accuracy of works involving the setting out and checking of all dimensions on the drawing and on site. Dimensions must not be scaled from this drawing.



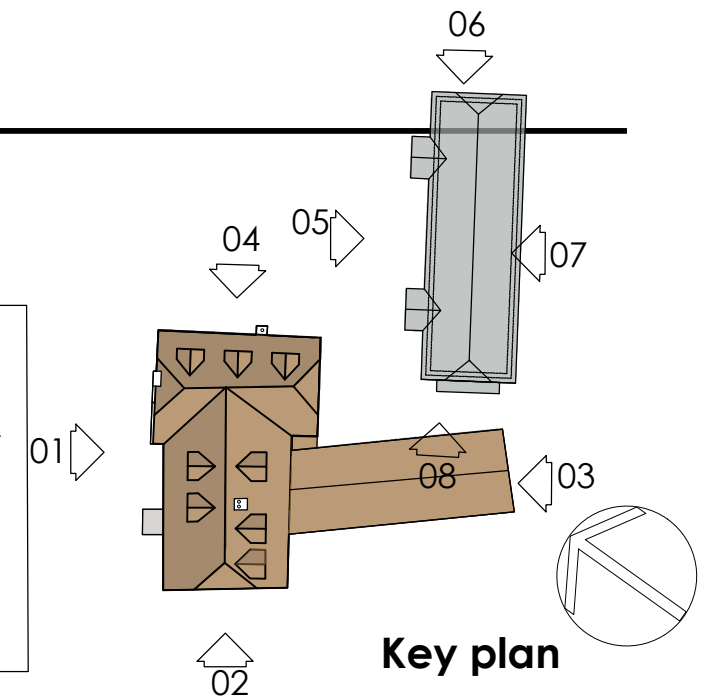
**07 South East Elevation**



**08 South West Elevation**

**Material Key**

1. Walls - Handmade Brickwork to match existing, flemish bond.
2. Walls - Horizontal oak boarding with oak corner posts.
3. Roof - Slate
4. Gutters/downpipes - Black aluminium half round
5. Windows - timber double glazed
6. Doors - hardwood timber
7. Entrance - Oak timber frame
8. Fascias/soffits - oak with rafter feet expressed.



**Key plan**

Rev c - 27/04/2021 - Bike storage 'lean to' added to side of new single storey block. Existing hedge removed, New accommodation block moved to edge of Hucker's Lane, Length of block reduced, Half hip added to roof design, timber cladding revised on elevation.

Rev b - 15/12/2020 - side extension removed, single storey retained, new single storey block added to rear  
rev a - flat roof replaced with dormer, transom added to windows

REVISIONS:

## Planning

**barclay+phillips**  
architects

a: The Studio, 5 Oakridge Office Park,  
Southampton Road, Salisbury SP5 3HT  
e: enquiries@barclay-phillips.co.uk  
t: +44 (0) 1722 711177

[www.barclay-phillips.co.uk](http://www.barclay-phillips.co.uk)

PROJECT:  
Proposed Re-development of The Queens at Selborne, High Street,  
Selborne, Hampshire, GU34 3JJ

CLIENT:  
Derek Warwick Developments Ltd.

DRAWING TITLE:  
Proposed South Elevations



SCALE:  
1:100 @ A3

DATE:  
May 2020

DRAWING No.  
**P18-014**  
**02-05-006c**

DRAWN BY:  
NB

CHECKED BY: