

APPENDIX 3. Plan Comparisons & areas of Demolition

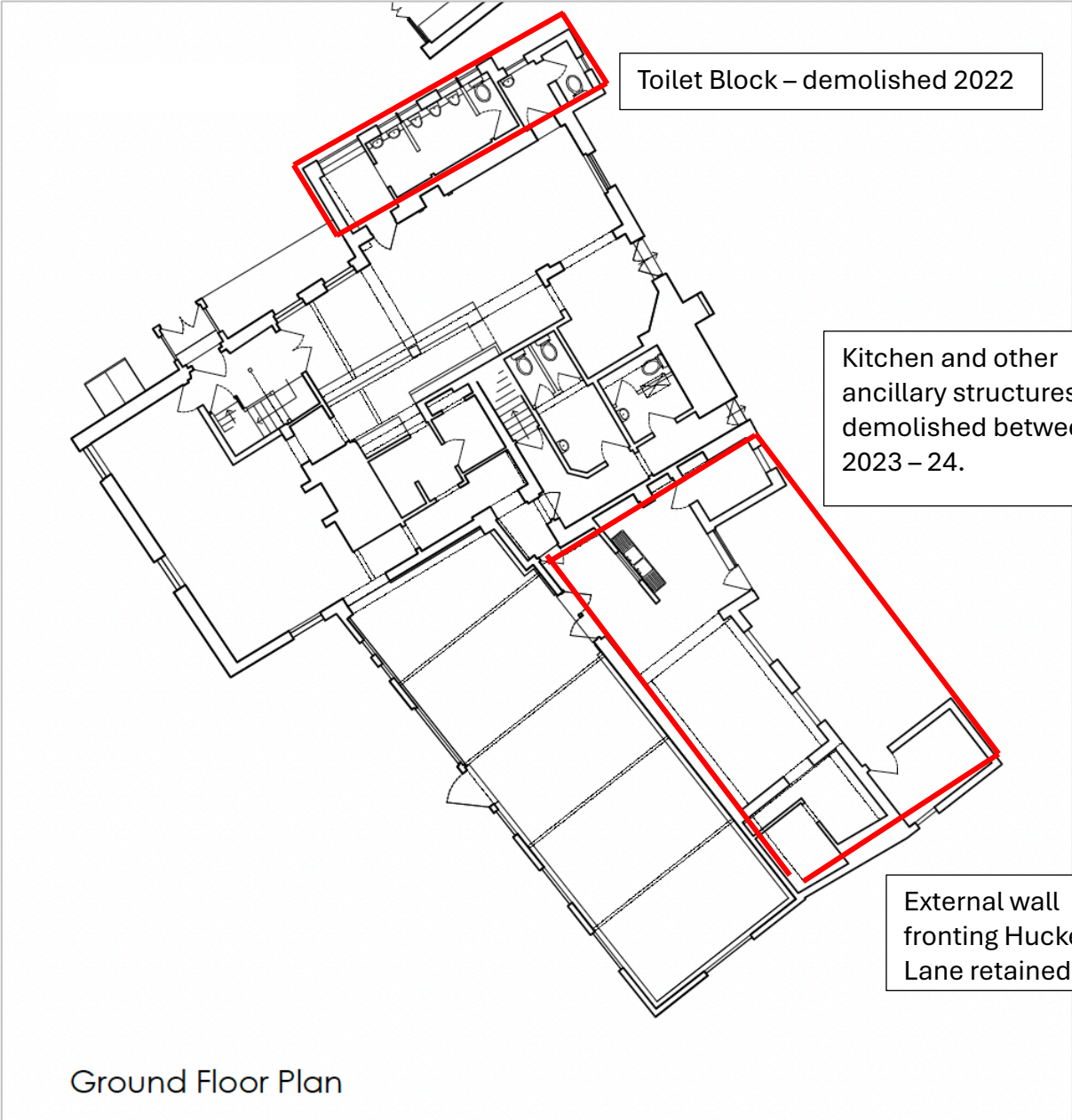


Figure 1. Demolition of parts of The Queens Hotel between 2022 – 2024 - plan.



*Figure 2. Toilet block demolished 2022 outlined in red*



*Figure 3. Kitchen and other ancillary structures, demolished 2023 – 24 (existing wall fronting Huckers Lane retained)*

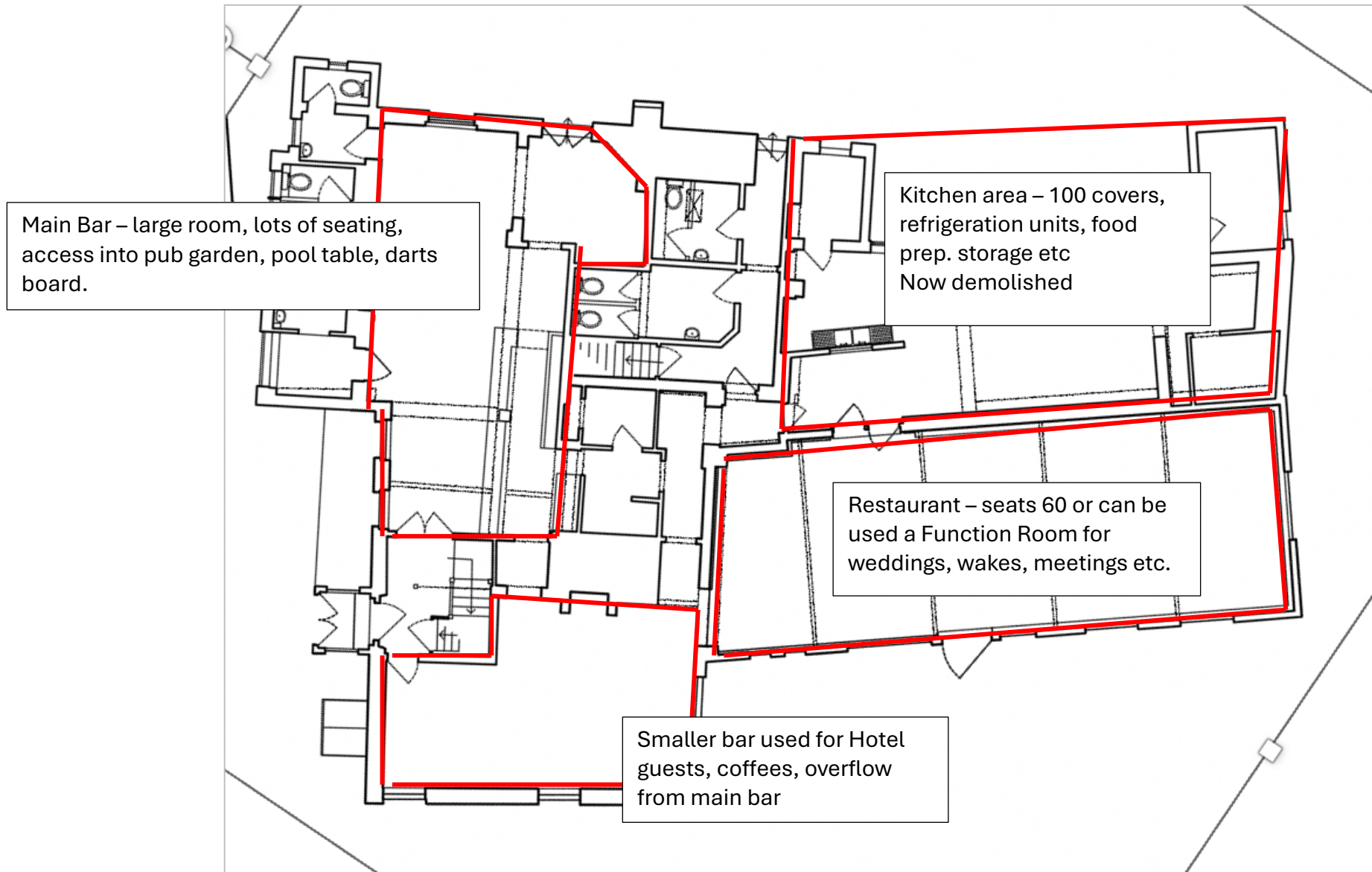


Figure 4. PRE-2022 Internal arrangement of the ground floor of The Queens showing main publicly accessible spaces and rear kitchen area

The other part of ground floor currently leased by GWM – no specified use, currently used for storage

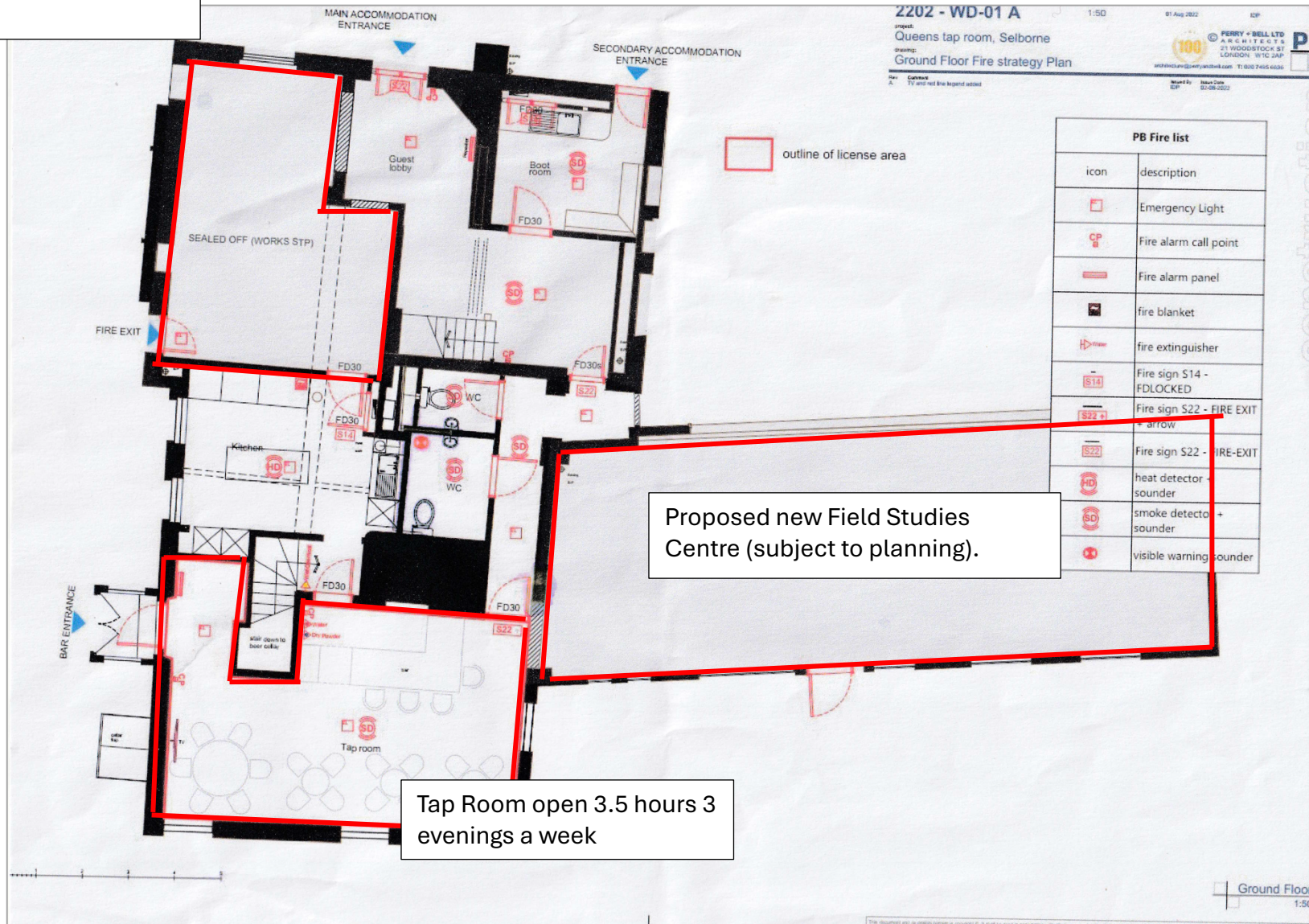


Figure 5. CURRENT Internal arrangement of The Queens 2024 showing use of spaces and proposed Field Studies Centre.



Figure 6. **PROPOSED** arrangement of the Ground Floor, showing Tap Room in the wrong place



Figure 7. PRE-2022 First Floor The Queens Hotel 2022 LHS 5 en suite double bedrooms (10 bed spaces)- CURRENT 2024 RHS 2 self-catering apartments 5 double bedrooms (1 en suite) (10 bed spaces)



Figure 8. **PROPOSED** First Floor The Queens Hotel 2022 LHS 5 en suite double bedrooms (10 bed spaces)- **CURRENT** 2024 RHS 2 self catering apartments 5 double bedrooms (1 en suite) (10 bed spaces)

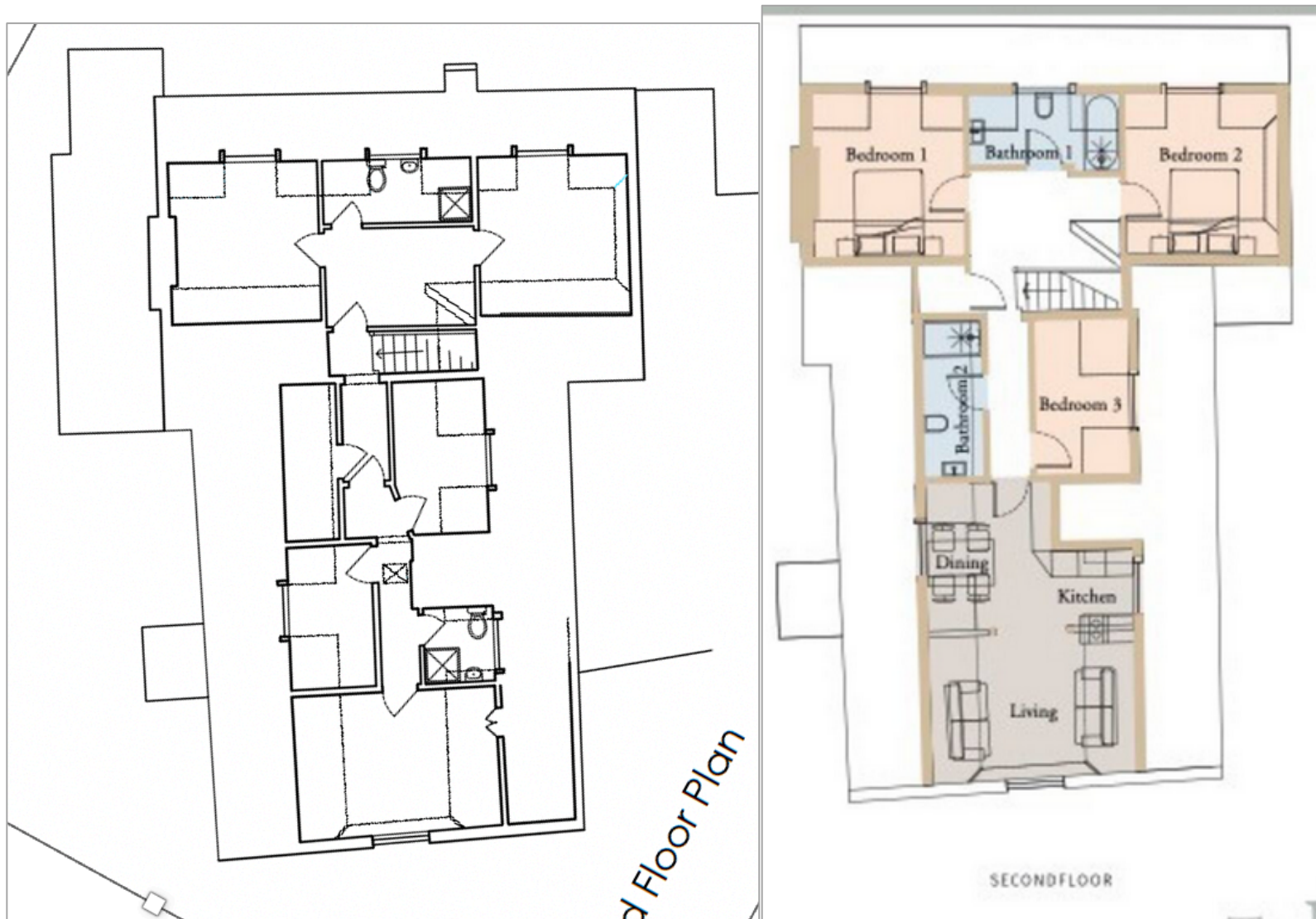


Figure 9. PRE-2022 Second floor of The Queens 2020 LHS - 2 bedroom Family rooms plus staff flat (6 bedspaces) – CURRENT RHS 2024 1 self-catering flat 3 bedroom (5 bedspaces).





Figure 9. **PROPOSED** Second floor of The Queens 2020 LHS - 2 bedroom Family rooms plus staff flat (6 bedspaces) – **CURRENT** RHS 2024 1 self-catering flat 3 bedroom (5 bedspaces).