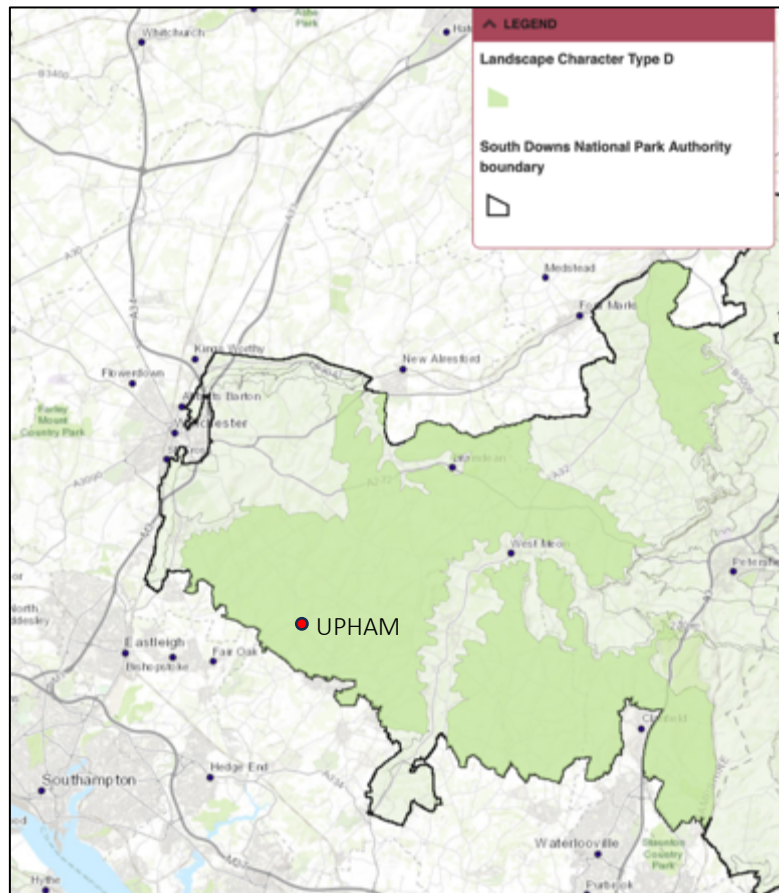


Appendix 1

The South Downs Landscape Character Assessment (LCA) 2020



The South Downs Landscape Character Assessment (LCA) 2020 identifies Upham in the “Downland Mosaic” Landscape Character Area (LCA D) and the “South Winchester Downland Mosaic” Landscape Character Type (LCT D1a). The LCA comprises an area of chalk downland at the western end of the South Downs, forming part of a broad area of chalk downland which extends westwards beyond Winchester to the Dorset Downs and Salisbury Plain, and north to Basingstoke. This type of downland is composed of an intricate mosaic of different field sizes, soil types (and hence land use), and extent of tree cover, which lead to variations in the degree of enclosure across the landscape type.

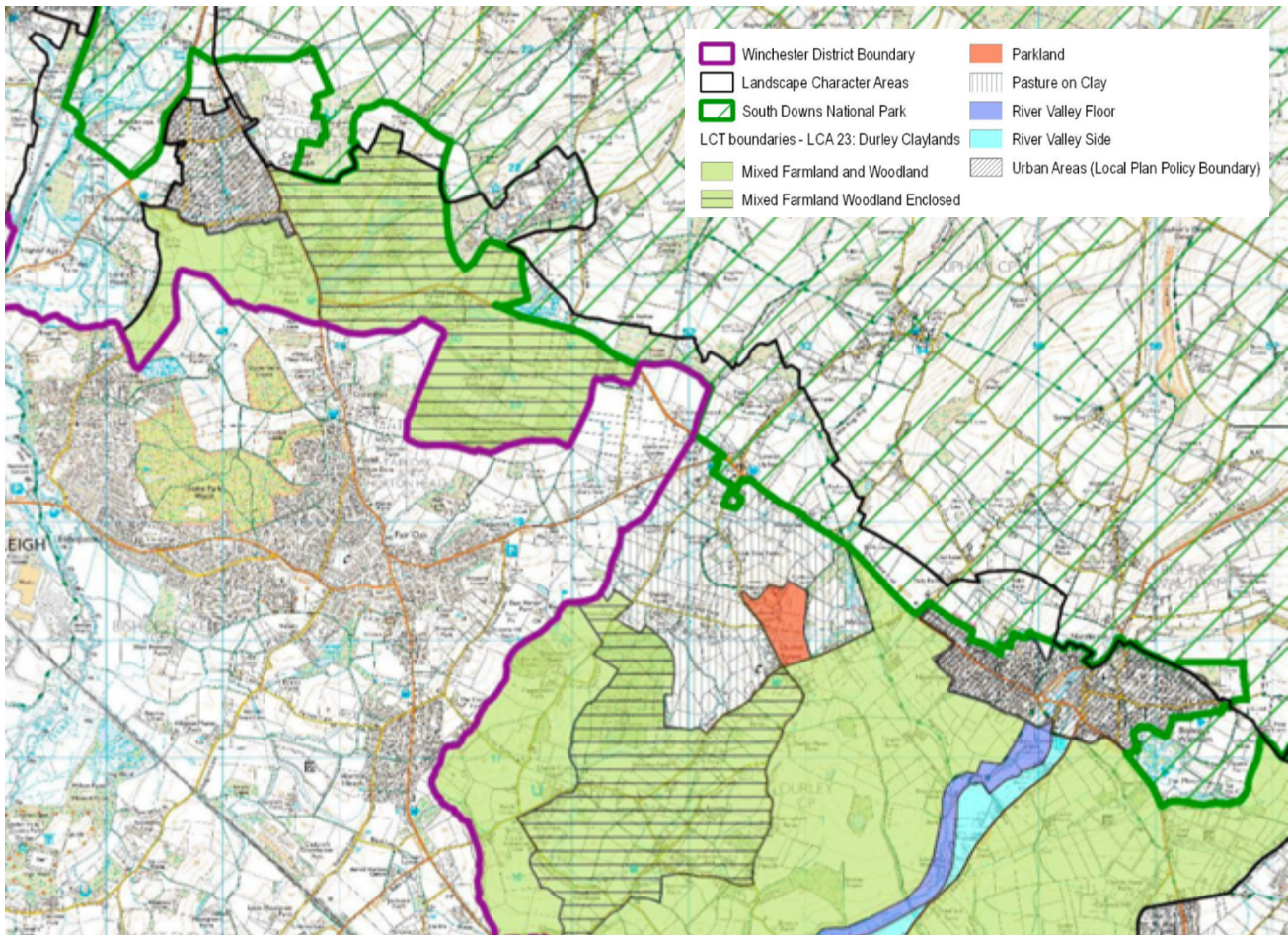
The large-scale rolling landform characteristic of the chalk dip slope, dissected by dry valleys, with localised secondary escarpments marks the division between different formations of chalk. There is a low density of dispersed settlement across the downland with a scattering of nucleated settlement in preferred lower lying areas. Distinctive churches are often landmarks. Upham is one of these settlements. Typically, downland mosaic has deciduous woodlands, lowland calcareous grassland, and a network of hedgerows.

Suitable guidelines to improve biodiversity would include:

- Manage woodland to achieve good condition, age, and species diversity.
- Seek to plant new broadleaved woodlands with suitable species and improve woodland connectivity.
- Manage hedgerows and plant to complete the network.
- Manage chalk grassland areas and seek to expand and connect.
- Increase species diversity of semi-improved grasslands.
- Create buffer strips along hedgerows and woodland edges.
- Increase diversity of arable farmland by Creating arable margins and pollinator species corridors.
- Maintain winter cover, feed crops or stubbles and areas of fallow land.

Appendix 2

Winchester City Council Landscape Character Assessment (LCA) 2022



The Winchester City Council Landscape Character Assessment (LCA) 2022 identifies Lower Upham in the Durley Claylands Landscape Character Area LCA 23. The landscape area comprises a relatively low lying, gently undulating landscape with a with a geology of London clay. The relationship of the clay with the adjacent chalk to the north has resulted in a series of springs along this boundary, together with a network of small streams, ditches, and ponds running through the character area. As well as influencing the vegetation of the area, with its rich pastures and oak woodland, the geology and hydrology of the area has also resulted in a relatively large number of farms and scattered houses throughout the area, which have developed on the spring-line.

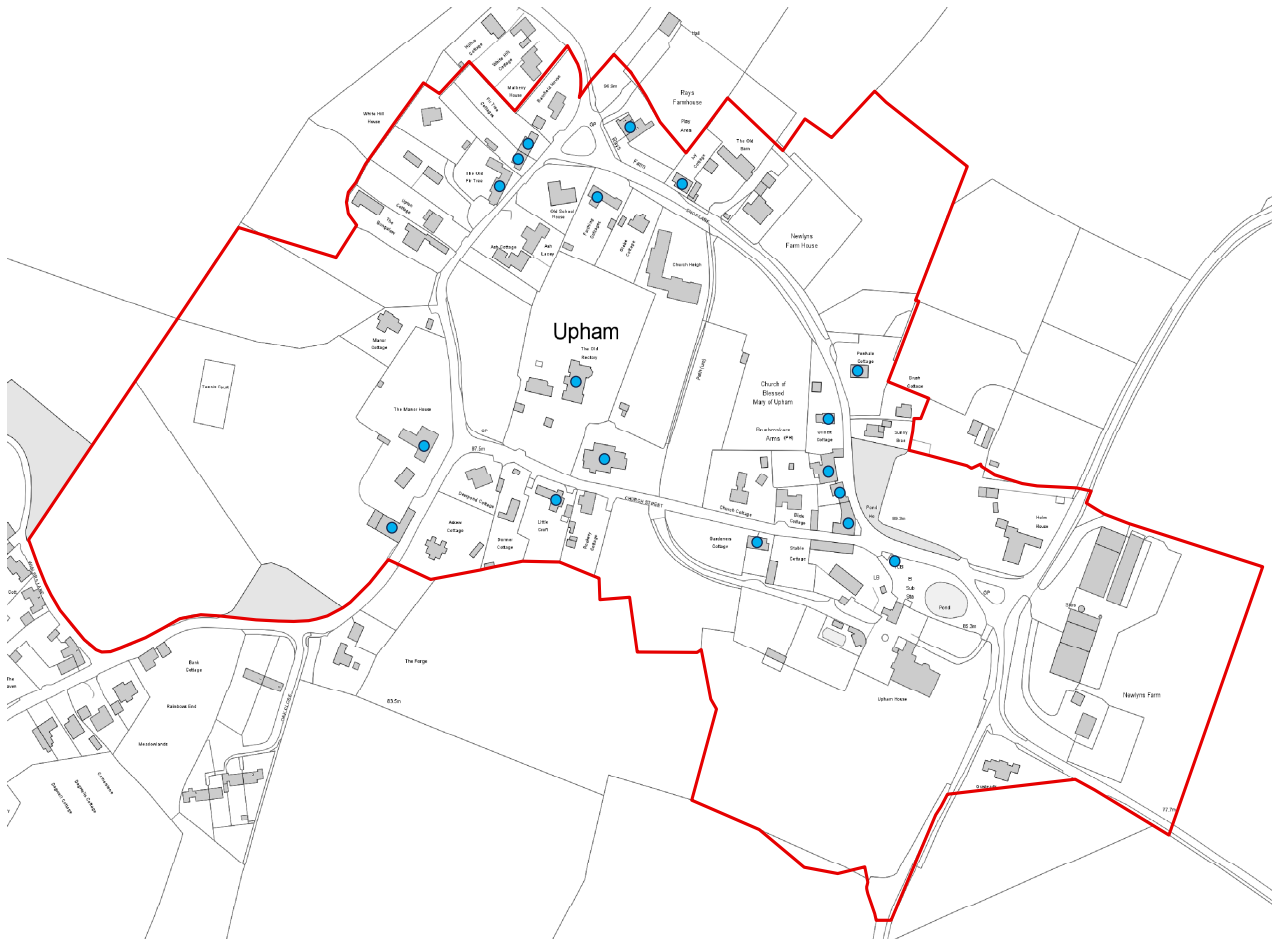
In Lower Upham the fields are of predominantly pasture, with straight clipped hedgerows and regularly spaced oak trees. The lanes are also generally straighter and bounded by relatively wide grass verges. Compared to other rural areas in the district, the character area is relatively well settled, consisting of numerous farms and loosely connected dwellings.

Suitable guidelines to retain local character would include,

- Protect and conserve woodlands hedgerows and historic field patterns.
- Preserve ancient narrow winding lanes, and quiet rural character.
- Protect grasslands of ecological interest.
- Conserve the scattered pattern of rural farm settlements and respect the small-scale nature of existing dwellings.
- Protect against suburbanization and urban fringe encroachment.

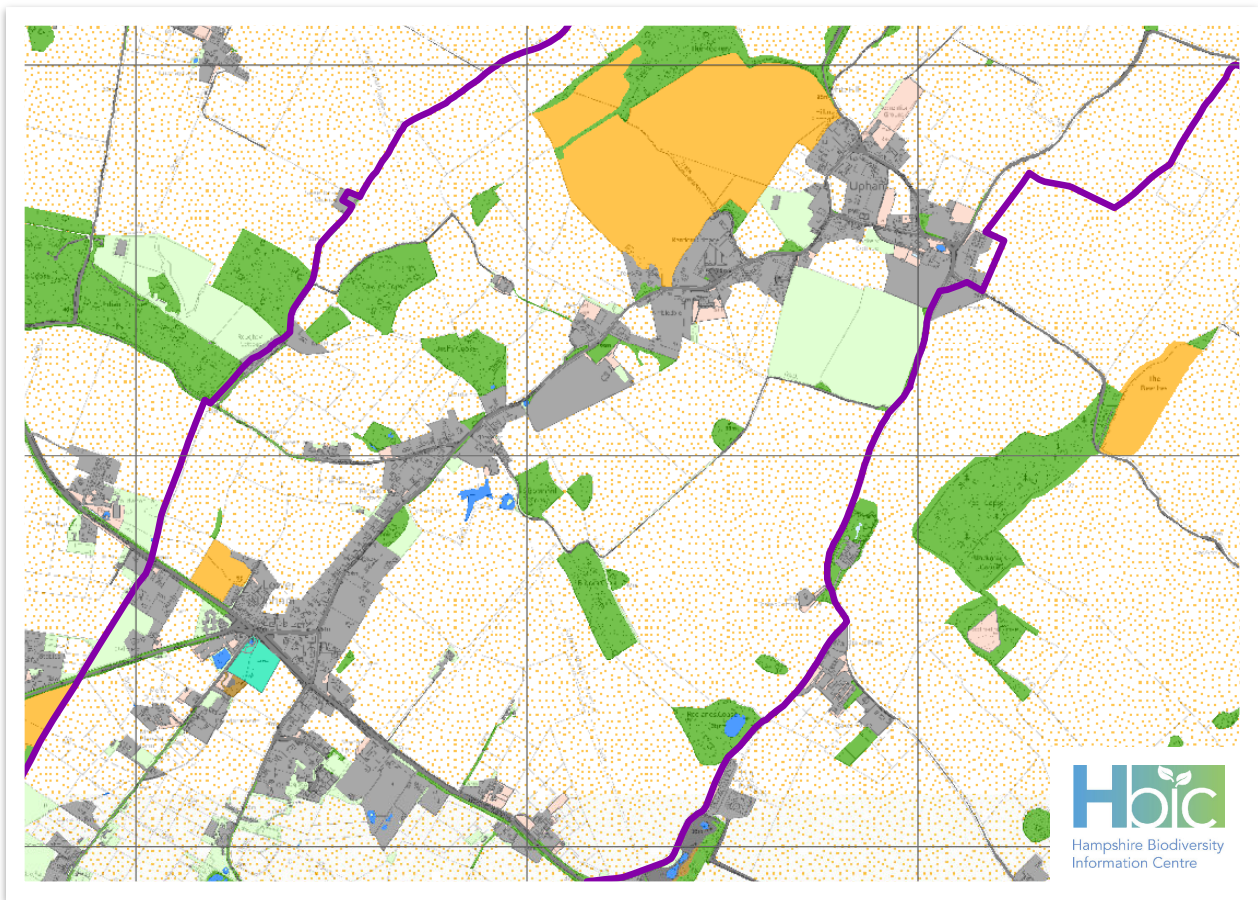
Appendix 3

Listed Buildings in Upham Conservation Area & within Upham Parish



Upham Conservation Area is edged in red and Listed buildings within the Conservation Area marked with blue dots. Refer also to Upham Conservation Area Technical Assessment (September 2000) and The National Heritage List for England (NHLE) for the official register of all nationally protected buildings and sites in England.

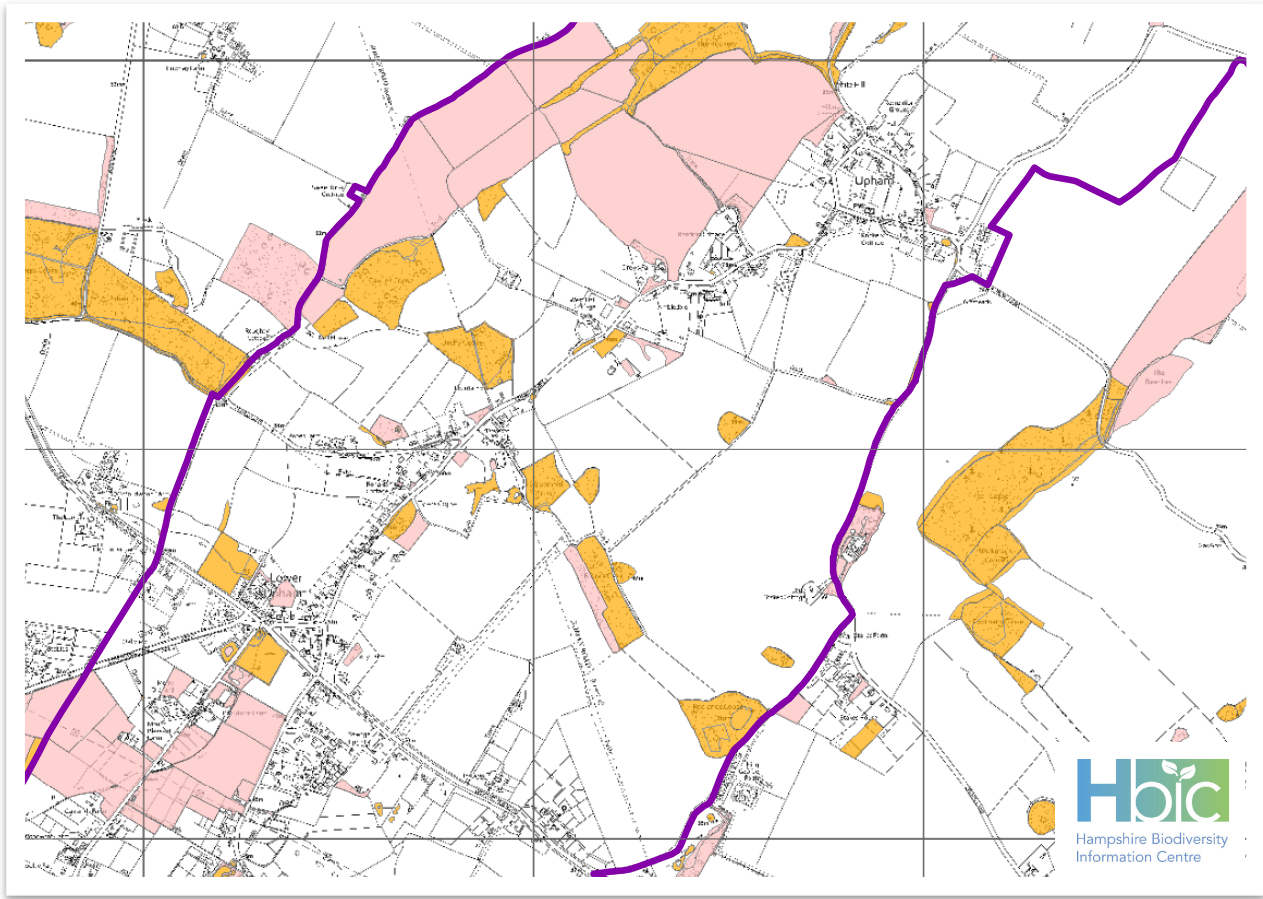
List Entry Name	List Entry Number	Grade	Location
THE MANOR HOUSE	1095635	II	THE MANOR HOUSE UPHAM STREET Upham Winchester Hampshire
WEST HALL	1157494	II	WEST HALL UPHAM STREET Upham Winchester Hampshire
THE OLD FIR TREE	1301558	II	THE OLD FIR TREE UPHAM STREET Upham Winchester Hampshire
SWEET BRIAR COTTAGES	1157205	II	SWEET BRIAR COTTAGES ROWHAY LANE Upham UPHAM Winchester Hampshire
POND HOUSE AND BOUNDARY WALL	1350697	II	POND HOUSE AND BOUNDARY WALL SHOE LANE Upham Winchester Hampshire
FIR TREE COTTAGES	1095636	II	FIR TREE COTTAGES 1 AND 2 UPHAM STREET Upham Winchester Hampshire
BARN AND STABLE 40 METRES SOUTH OF THE MANOR HOUSE	1350699	II	BARN AND STABLE 40 METRES SOUTH OF THE MANOR HOUSE UPHAM STREET Upham Winchester Hampshire
WELL HOUSE 10 METRES NORTH OF THE MANOR HOUSE	1157506	II	WELL HOUSE 10 METRES NORTH OF THE MANOR HOUSE UPHAM STREET Upham Winchester Hampshire
STROUDWOOD FARMHOUSE	1281382	II	STROUDWOOD FARMHOUSE WINCHESTER ROAD Fair Oak and Horton Heath LOWER UPHAM Eastleigh Hampshire
Timber-framed barn at Lower Preshaw Farm	1423733	II	Timber-framed barn at Lower Preshaw Farm Preshaw Upham Southampton SO32 1HP Upham Winchester Hampshire
GRANARY 5 METRES NORTH OF OLD FARMHOUSE	1301640	II	GRANARY 5 METRES NORTH OF OLD FARMHOUSE Upham LOWER PRESHAW Winchester Hampshire
PENHALE COTTAGE	1157451	II	PENHALE COTTAGE SHOE LANE Upham Winchester Hampshire
NEAR BRUSHMAKERS ARMS AND VILLAGE POND TELEPHONE KIOSK	1095687	II	NEAR BRUSHMAKERS ARMS AND VILLAGE POND TELEPHONE KIOSK CHURCH STREET Upham Winchester Hampshire
GILBERTS COTTAGE	1350698	II	GILBERTS COTTAGE SHOE LANE Upham Winchester Hampshire
GARDENERS COTTAGE	1095631	II	GARDENERS COTTAGE CHURCH STREET Upham Winchester Hampshire
1, SHOE LANE	1095632	II	1 SHOE LANE Upham Winchester Hampshire
BRUSHMAKERS ARMS	1157298	II	BRUSHMAKERS ARMS SHOE LANE Upham Winchester Hampshire
LITTLE CROFT	1301715	II	LITTLE CROFT CHURCH STREET Upham Winchester Hampshire
WOOL STREET FARMHOUSE	1095629	II	WOOL STREET FARMHOUSE Upham Winchester Hampshire
FARTHING COTTAGE	1301573	II	FARTHING COTTAGE SHOE LANE Upham Winchester Hampshire
THE RECTORY	1179850	II	THE RECTORY CHURCH STREET Upham Winchester Hampshire
IVY COTTAGE	1095633	II	IVY COTTAGE SHOE LANE Upham Winchester Hampshire
KAY'S FARMHOUSE	1095634	II	KAY'S FARMHOUSE SHOE LANE Upham Winchester Hampshire
OLD FARMHOUSE	1301719	II	OLD FARMHOUSE Upham LOWER PRESHAW Winchester Hampshire
TOMB MONUMENT 30 METRES EAST OF THE CHANCEL	1095630	II	TOMB MONUMENT 30 METRES EAST OF THE CHANCEL CHURCH STREET Upham Winchester Hampshire
BELMORE HOUSE	1350695	II	BELMORE HOUSE Upham Winchester Hampshire
CHURCH OF ST MARY	1350696	II	CHURCH OF ST MARY CHURCH STREET Upham Winchester Hampshire



The purple line denotes the boundary of Upham Parish.



Biodiversity: Ecological Network Mapping



The purple line denotes the boundary of Upham Parish.
Areas shaded in orange are Core Non-Statutory.
Areas shaded in pink are Network Opportunities.

The Hampshire biodiversity information centre (HBIC) has produced a detailed ecological network map for Hampshire, on behalf of the local nature partnership (LNP).

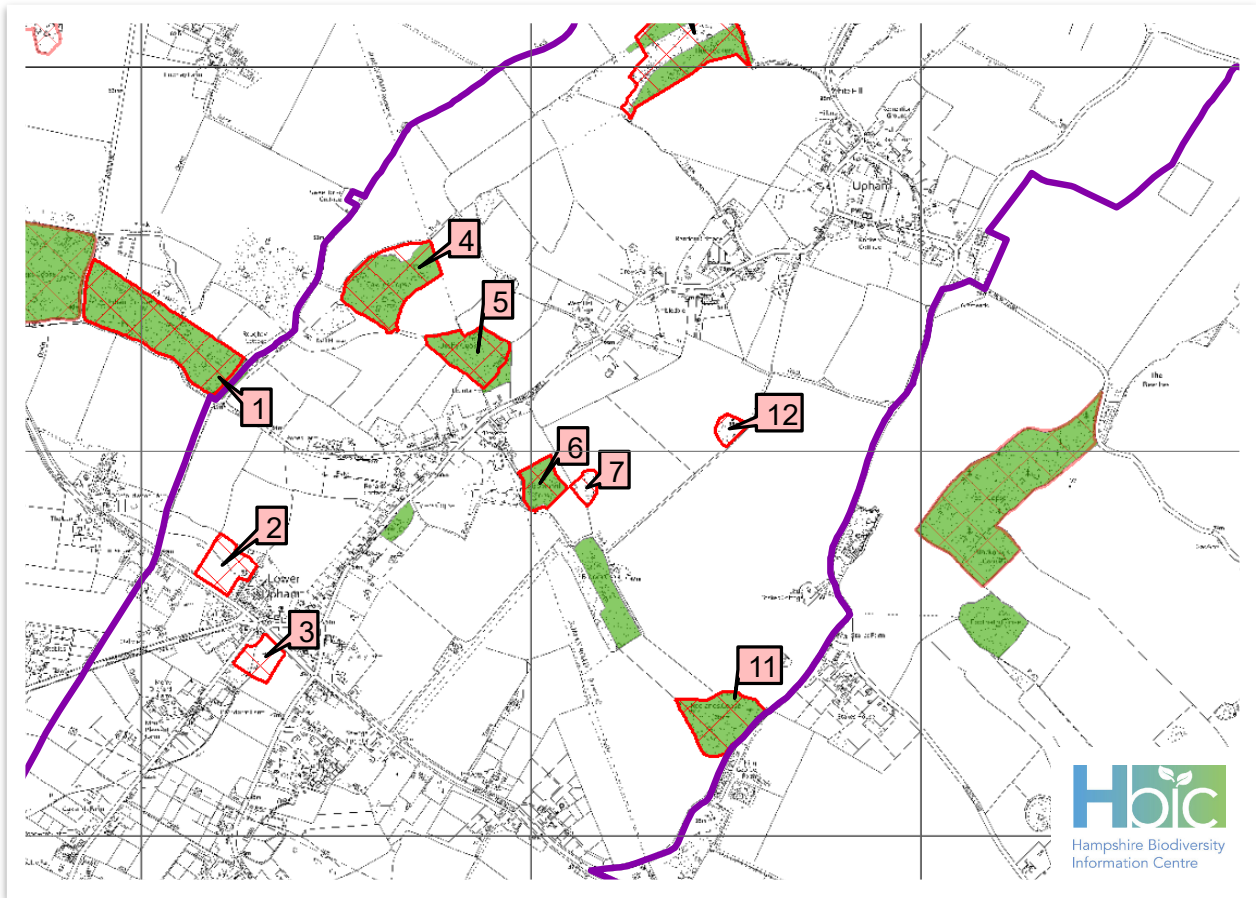
An ecological network is a group of habitat patches that species can move easily between maintaining ecological function and conserving biodiversity. Through appropriate management, ecological networks can provide a connected collection of refuges for wildlife. Establishing network will enable biodiversity to recover from recent declines and create a more resilient natural environment.

The aims of the network are to:

- Improve the quality of current wildlife sites by better habitat management.
- Increase the size of existing wildlife sites.
- Enhance connections between sites, either through physical corridors or through stepping stones.
- Create new sites.
- Reduce the pressure on wildlife by improving the wider environment.

The national planning policy framework (NPPF) requires local planning authorities to map and consider ecological networks within their plans, policies and decisions.

Biodiversity: Ecological Data



The purple line denotes the boundary of Upham Parish.

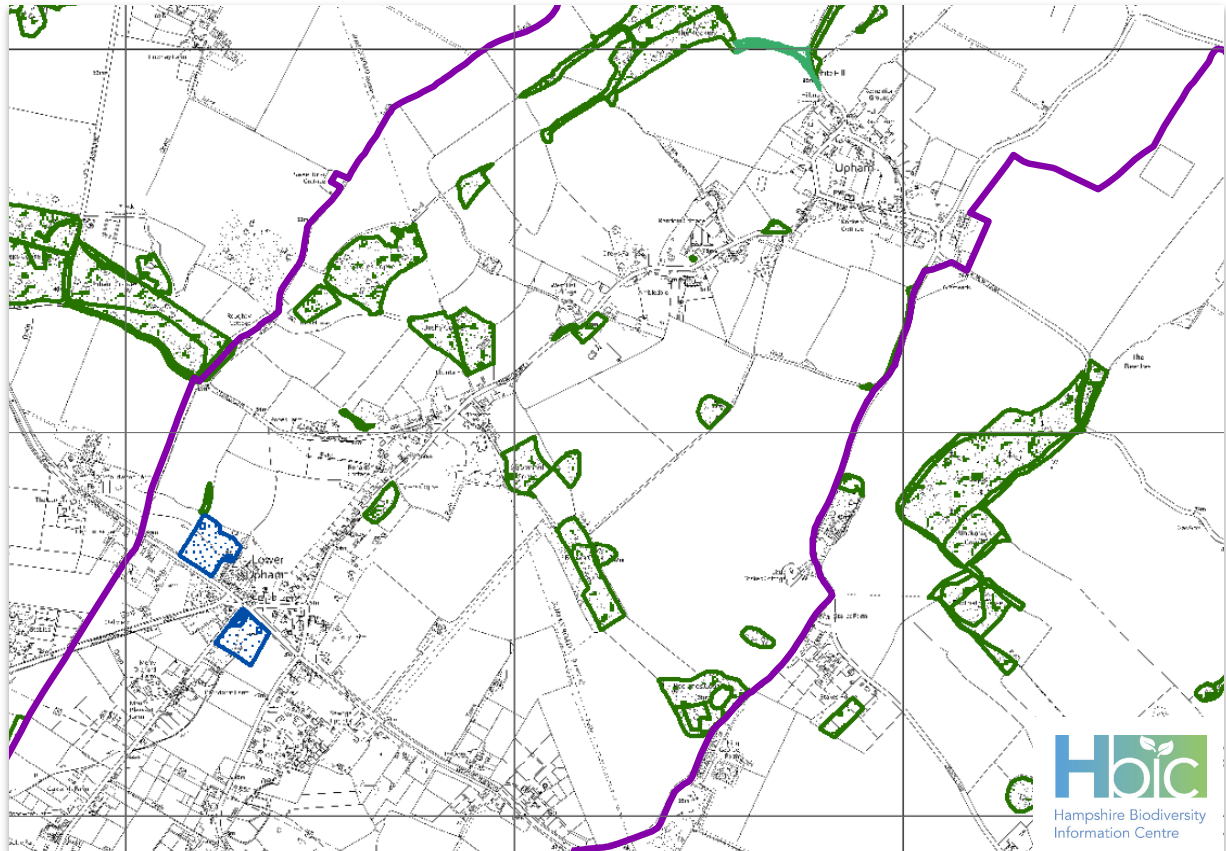
Areas edged and hatched in red are designated Sites of Importance for Nature Conservation (SINCs), listed below.

Areas shaded in green are woodland on the Ancient Woodland Inventory.

Map Label	Status	SINC Ref	SINC Name	Central Grid Ref.
1	SINC	WC0157	Upham Copse	SU52102030
2	SINC	WC0159	Lower Upham Meadow	SU52201970
3	SINC	WC0160	Alma Meadows (North)	SU52301947
4	SINC	WC0172	Cawtes Copse	SU52602040
5	SINC	WC0180	Bushy Copse, Upham	SU52802030
6	SINC	WC0188	Slappinrail Copse	SU53001990
7	SINC	WC0195	Upham Farm Wood West	SU53151990
8	SINC	WC0199	Kimbers Copse	SU53201850
9	SINC	WC0658	Wintershill Farm Woodland	SU53321860
10	SINC	WC0204	Buldean Copse & The Rookery	SU53402120
11	SINC	WC0211	Redlands Copse	SU53501940
12	SINC	WC0212	Upham Farm Wood East	SU53502005

Woodland areas not numbered are designated SINCs outside the parish boundary.

Biodiversity: Priority Habitats within Upham Parish



- | | | | |
|-------------------------------------------------------------------------------------|----------------------------------------------|-------------------------------------------------------------------------------------|--------------------------------------|
|  | Lowland Meadows |  | Arable Field Margins |
|  | Lowland Mixed Deciduous Woodland |  | Coastal Saltmarsh |
|  | Maritime Cliff and Slopes |  | Coastal Sand Dunes |
|  | Lowland Raised Bog |  | Coastal Vegetated Shingle |
|  | Open Mosaic Habitats on Previously Developed |  | Coastal and Floodplain Grazing Marsh |
|  | Ponds |  | Eutrophic Standing Waters |
|  | Purple Moor Grass and Rush Pastures |  | Hedgerows |
|  | Reedbeds |  | Intertidal Mudflats |
|  | Rivers |  | Intertidal chalk |
|  | Saline Lagoons |  | Lowland Beech and Yew Woodland |
|  | Seagrass Beds |  | Lowland Calcareous Grassland |
|  | Traditional Orchards |  | Lowland Dry Acid Grassland |
|  | Wet Woodland |  | Lowland Fens |
|  | Wood-Pasture and Parkland |  | Lowland Heathland |

The Hampshire Biodiversity Information Centre (HBIC) maintains databases containing information on habitats, species, and designated sites across Hampshire. Refer to the Hampshire County Council website hants.gov.uk for further details.