



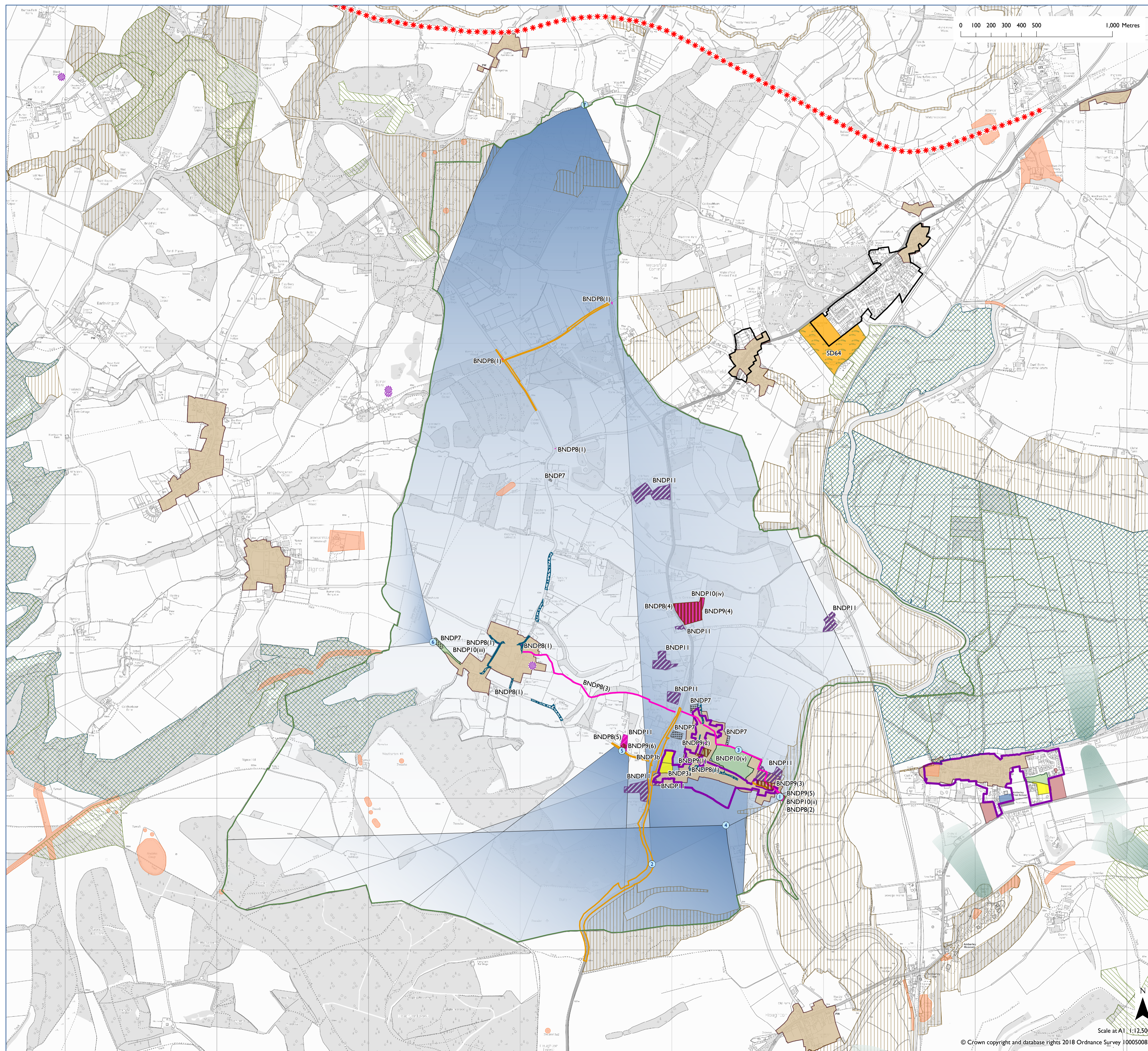


South Downs Submission  
Local Plan:  
Bury

Bury NDP Made 12 April 2018

-  NDP Designated Boundary (where shown)
-  NDP Settlement Boundary
-  NDP Employment Site Allocation
-  NDP Housing Allocation
-  NDP Local Open Space Designation
-  NDP Local Green Space Designation
-  NDP Historic Orchard
-  NDP Parish Heritage Asset
-  NDP Parish Heritage Asset
-  NDP Sunken Lane
-  NDP Notable Road Verges
-  NDP View
-  NDP Valued View
-  NDP Protected Local View
-  NDP Community Facility
-  NDP Car Park Indicative Location
-  NDP School/Village Hall Designation
-  Registered Parks and Gardens SD12
-  Safeguarded Non-motorised Travel Route SD20
-  Settlement Boundary SD25
-  Housing Allocation (SD89) – public open space
-  Mixed Use Allocation
-  Scheduled Monument SD12
-  Conservation Area SD15
-  International Nature Conservation Designation SD9 (where present)
-  National Nature Conservation Designation SD9 (where present)
-  Local Nature Conservation Designation SD9 (where present)



Map Notes:  
The mixed use allocation at Coldwaltam has been determined by the South Downs Local Plan. NDP allocations to the south west of Bury Neighbourhood Area are determined by Amberley NDP.