

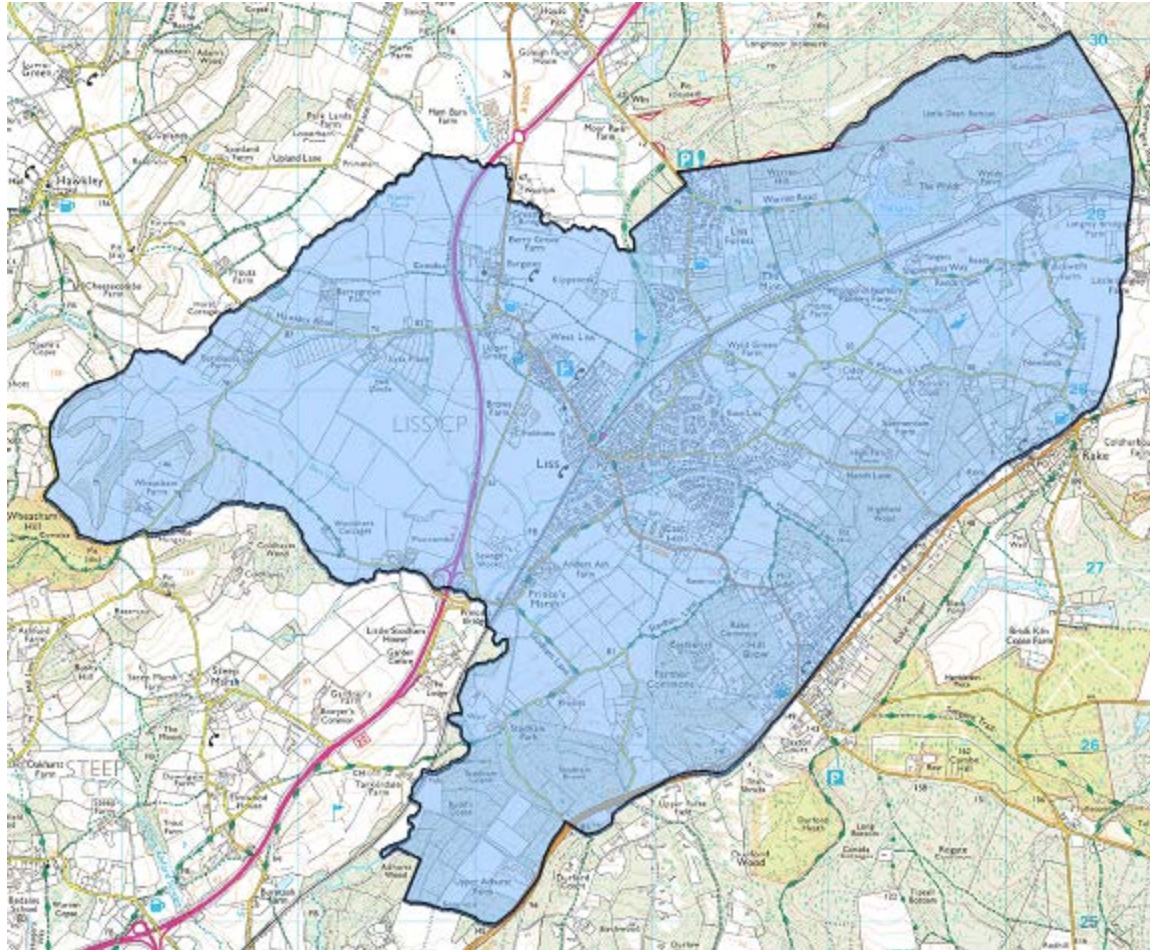
Agenda Item 11

Liss Neighbourhood Development Plan Decision Statement

Report PC61/17



The Liss Neighbourhood Area – entire parish of Liss



Examiner's report highlights....

- Recommends that all open spaces identified in the LNDP are designated as Local Green Space – afforded protection as per NPPF
- Examiner supports LNDP approach to site selection process ' process was transparent and allowed adequate opportunity for public comment



Lissvillage
neighbourhood plan

Liss Village Neighbourhood Development Plan 2011 - 2028

Submitted Plan - November 2016



Progress so far / next steps

- Area designated September 2014
- Pre Submission March 2016
- Submission November 2016
- Examination Public Hearing June 2017
- Decision Statement September 2017

- *Possible Referendum date 9 November 2017*

Lissvillage neighbourhood plan

Liss Village Neighbourhood Development Plan 2011 - 2028

Submitted Plan - November 2016



Liss Parish Council



Recommendation

- 1) Note the Examiner's Report and recommended modifications (Appendix 2) to make the Liss Neighbourhood Development Plan meet the basic conditions.
- 2) Agree the publication of the 'Decision Statement' as set out at Appendix 3 of the report, which sets out the modifications that will be made to the Liss Neighbourhood Development Plan in response the Examiner's modifications.

