

Planning Committee Meeting

12th October 2017

Agenda Item 9

Land south of The Seven Stars, Ramsdean Road,
Stroud, Petersfield, Hampshire, GU32 3PJ

SDNP/17/01744/FUL: Erection of 26 dwellings and a
Village Hall



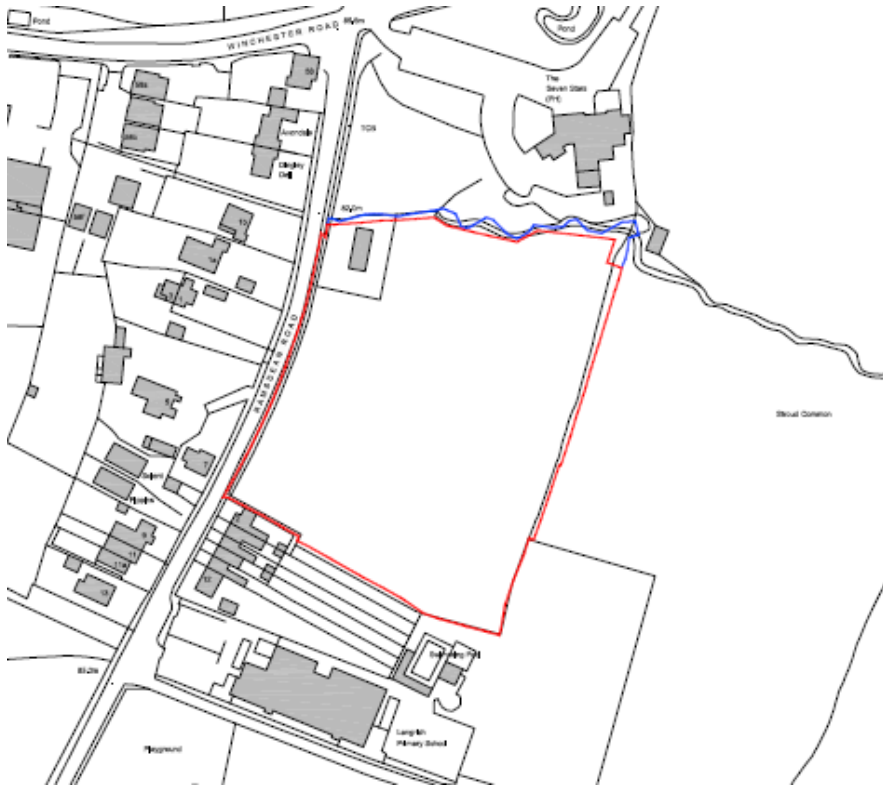
Introduction

Considerations

- Planning policy
- Major development in a National Park
- Housing mix
- Affordable housing
- Impact on the National Park landscape and design
- Ecology



The site



SITE



Site Plan & Street Scenes



Street Scene A - A



Street Scene B - B

1



2



3



4



5



6



7



8



9



10



11



12



Considerations

- Planning policy
- Major development in a National Park
- Housing mix
- Affordable housing
- Impact on the National Park landscape and design
- Ecology

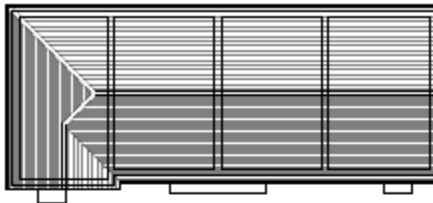
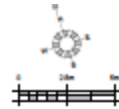
Recommendation

That planning permission be **refused** for the reasons outlined in paragraph 10.1 of the report. However, refusal reason 6 in relation to ecology should no longer form a reason for refusal.

Typical floor plans/elevations for the open market dwellings



Floor plans/elevations for the affordable units on plots 1-4



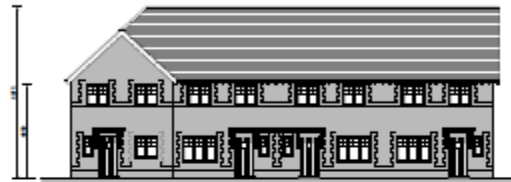
Roof Plan



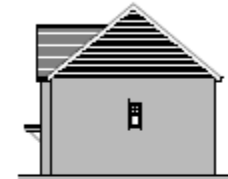
First Floor Plan



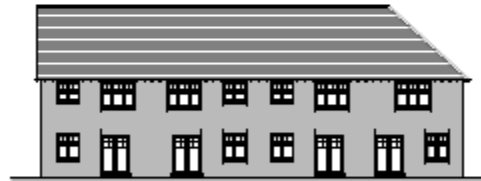
Ground Floor Plan



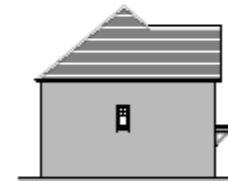
Front Elevation



Side Elevation



Rear Elevation



Side Elevation

